

LED Controller

Specifications



Before you use the LED controller, please read this file first and save it for future

We will struggle and serve for the booming development of LED industry!

BX-Y08

Statement

Any companies or privates cannot copy, transcribe or translate part or whole content of this file without our written permission. And cannot use it on any business or benefit filed with any forms.

The specifications and information which are mentioned on the file is for reference only, if there's update, we will not inform you. This file is only for guidance, and all information will not be for any promises.

CATALOG

Brief Introduction.....	1
About Software.....	1
Product photos.....	1
Characteristics.....	2
Guiding.....	3
Safety Notes.....	3
Function instruction.....	4
Control area.....	4
Support high refresh.....	4
Multiple communication mode.....	4
WiFi wireless communication.....	4
Multiple communication mode.....	5
Lager storage capacity.....	5
Abundant 3D stunt.....	5
Support database.....	5
Support Android app.....	5
Online update firmware.....	6
Support many sensor.....	6
Support remote control.....	6
Timer switch screen.....	6
Relay function.....	7
Technical specifications.....	7
Dimension diagram.....	8
Interface diagram.....	9

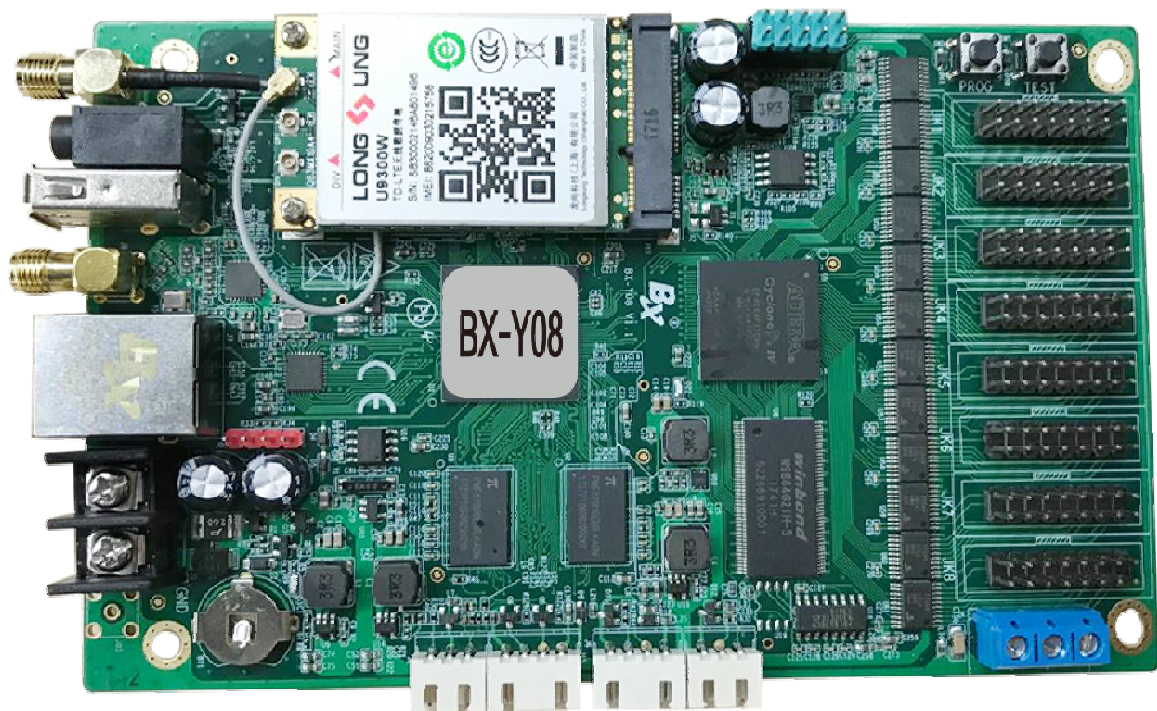
Brief Introduction

Thanks for ordering LED control card. The design of the control card is according to the international and industrial standard, but if the operations are incorrect, it will probably bring you personal injury and financial harm. As to avoid these and win more from your equipment, please obey the specifications of this file.

About Software

Cannot do any modification, decompilation, disassembling, decoding or reverse engineering on our software, it's illegal.

Product photos



Characteristics

- ◆ On-board 8*HUB75 Interface , one card to one screen,suitable for all kinds of small size LED full color screen
- ◆ High performance CPU, hardware decoding, HD video playback smoothly .
- ◆ On-board 100M Ethernet port,audio port, Support USB port Wi-Fi module and will support 4G router soon .
- ◆ Support cluster control, especially suitable for large-scale urban outdoor advertising screen large-scale deployment, management
- ◆ Abundant 3D stunt and Flash subtitle
- ◆ Support U disk display directly,also support importing display.
- ◆ Support Groups cluster management
- ◆ Support firmware update online.
- ◆ Support database,Very suitable for high-speed rail, hospitals, banks and other occasions of information release.
- ◆ Sensor:will support temperature sensor/ temperature&humidity sensor /noise sensor /air quality sensor /wind speed &wind direction sensor /brightness sensor in the near future
- ◆ Adopter the second YQ protocol,and it is more convenient for custom and SDK projects.

Guiding

Safety Notes

- ◆ Input voltage is 5V, voltage range is from 4V-6V, please make sure the quality of the power supply of BX-Y series.
- ◆ Please make sure that all the power supply cables are plugged off when you want to connect or plug off any signal or controlling cables.
- ◆ Please make sure that all the power supply cables and signal cables are plugged off when you need to put in or take off the hardware equipment.
- ◆ Please make sure the environment is clean, dry and ventilated when you use this product, also, do not put this product to a high temperature and wet environment.
- ◆ This product is electronic products, please keep away from fire, water source and flammable&combustible products.
- ◆ There's high pressure components in this products, please do not open the box and repair it by yourself.
- ◆ Turn off the power supply immediately when you find smoking, peculiar smell or something unusual. And contact with us soon.

Function instruction

Control area

BX-Y08 support 512× 256 ,Total 128K pixels, the maximum width ≤1024, the maximum height 512 .On board 8 T75 port.one screen match with one card,used for small size full color screen and cluster control.Widely used in Led posters and Led pole screens bus screens etc

Support high refresh

BX-Y series of controller support high refresh(here refers to the receiving card for LED screen refresh, users scan)or mobile phone camera shooting picture from time to time, no distortion, no scanning line, the true nature and excellent results.

Multiple communication mode

The controller is on board a 100M network interface, internal integrated 4G wireless module, WIFI module, also supports USB interface, external WIFI module. Built-in WIFI both as a hot spot (AP), but also as a terminal. Supports external 4G routers.

For the general network topology, users can use the network cable directly access the router or switch, and management PC communication.

For short-range wireless applications, the user can open the controller built-in WIFI, access to their own routers, to achieve online control management. Users can also open the controller's WIFI hot spots, access to their own PC controller, to achieve management control. For the controller hot spots, the user can set the password, the rights management.

Wi-Fi wireless communication

BX-Y08 controller is truly realized the wireless connection via it's Wi-Fi signal. users can save the cost by using the Wi-Fi signal .BX-Y08 support 100M Ethernet, easy to install and use. Wide applied range: Laptop worked within 100M. Desktop could work by wireless router connecting with BX-Y08 wireless controller communication.

Multiple communication mode

It has different type of control platform, including PC software LedshowYQ, iLEDCloud platform , iLEDsys system. LedshowYQ is used on PC , it can support windows XP, win7, win10 and other mainstream operating system. The software provides a comprehensive, rich controller configuration, programming, program release function.

iLEDCloud platform is a online multimedia information publishing platform, its core server pinned on the Alibaba cloud, providing excellent reliability and stability. Users only need the browser to use the platform, you can remotely edit program, preview the program, scheduled fixed-point playback. Users can log in via phone, pad and pc.

iLEDsys system is a high-end customers from the deployment of cloud platform, the platform will run on the user's own computer above, to achieve a more secure, stable and efficient management.

Lager storage capacity

BX-Y08 provides high-capacity built-in flash memory, also supports external capacity expansion. It was built-in 4G flash memory, users can store 8 hours of high-definition video.it provide SD card slot, allowing users to insert large capacity SD card, to expand capacity

Abundant 3D stunt

Support graphic text, subtitles, video, lunar calendar, dial, timing, temperature, humidity, announcements, weather forecasts areas.Text areas can be pictures or text, supporting a wealth of special effects, including curtain, pan, laser, mosaic, shutter and other common effects.

Controller built-in GPU (graphics processing unit), support Abundant 3D stunt and FLASH subtitle.

Support database

The controller will support database area, supports multi-page display, supports MYSQL, SQL server and other format database in the near future

Support Android app

BX-Y08 support Android APP LedshowYQ to add,edit and send program, very easy to operate.The APP support search screen, support multi language, support dynamic preview, video trans-coding function.Support gesture zoom in and out of partition function.

Flexible program release methods

Users can use PC software LedshowYQ to add ,edit , preview, release. If network is not convenient, users can also use U-disk to import programs or plug-in and display .USB transmit distance is $\leq 3M$,It can be reach 10 M with a extension line.

Online update firmware

BX-Y series support remote upgrade firmware, users can use PC software LedshowYQ, iLEDCloud platform to upgrade the latest firmware,to enhance controller functionality, performance, solve bugs.The controller has built-in logging function, it can record various important events, and support remote consult, analyze and solve the fault.

Support many sensor

Match with VMF multi-function card.BX-Y series can support many kinds of sensors . will support temperature sensor/ temperature&humidity sensor /noise sensor /air quality sensor /wind speed &wind direction sensor /brightness sensor in the near future.

Support remote control

BX-Y08 supports remote control , very easy to switch programs by the remote .and also the screen brightness,volume,turn on and off screen ,testing etc.user experience comparable to TV remote control, especially suitable for indoor led screen management.

Timer switch screen

The LedshowYQ software support timing switch screen. After setting the turn on and turn off time, the computer will turn on the machine on time and automatically. It can make use of manpower and material resources reasonably, and greatly improve the service life and reliability of the display screen. When the user is inconvenient to operate on the side of the computer, this function can better realize no one. The function of duty.

Relay function

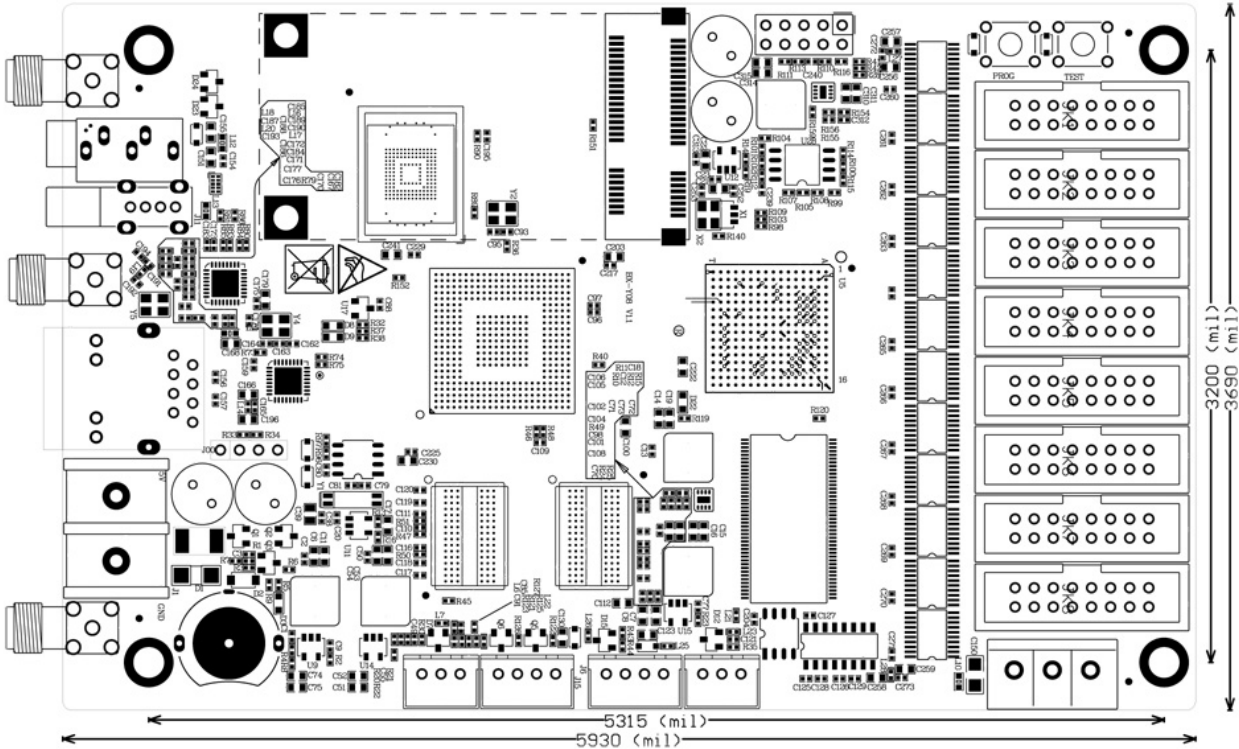
In the near future ,BX-Y series will add relay function ,Match with VMF multi-function card,the controller supports remote start, shutdown control , effectively reduce the screen power consumption, saving energy.

Technical specifications

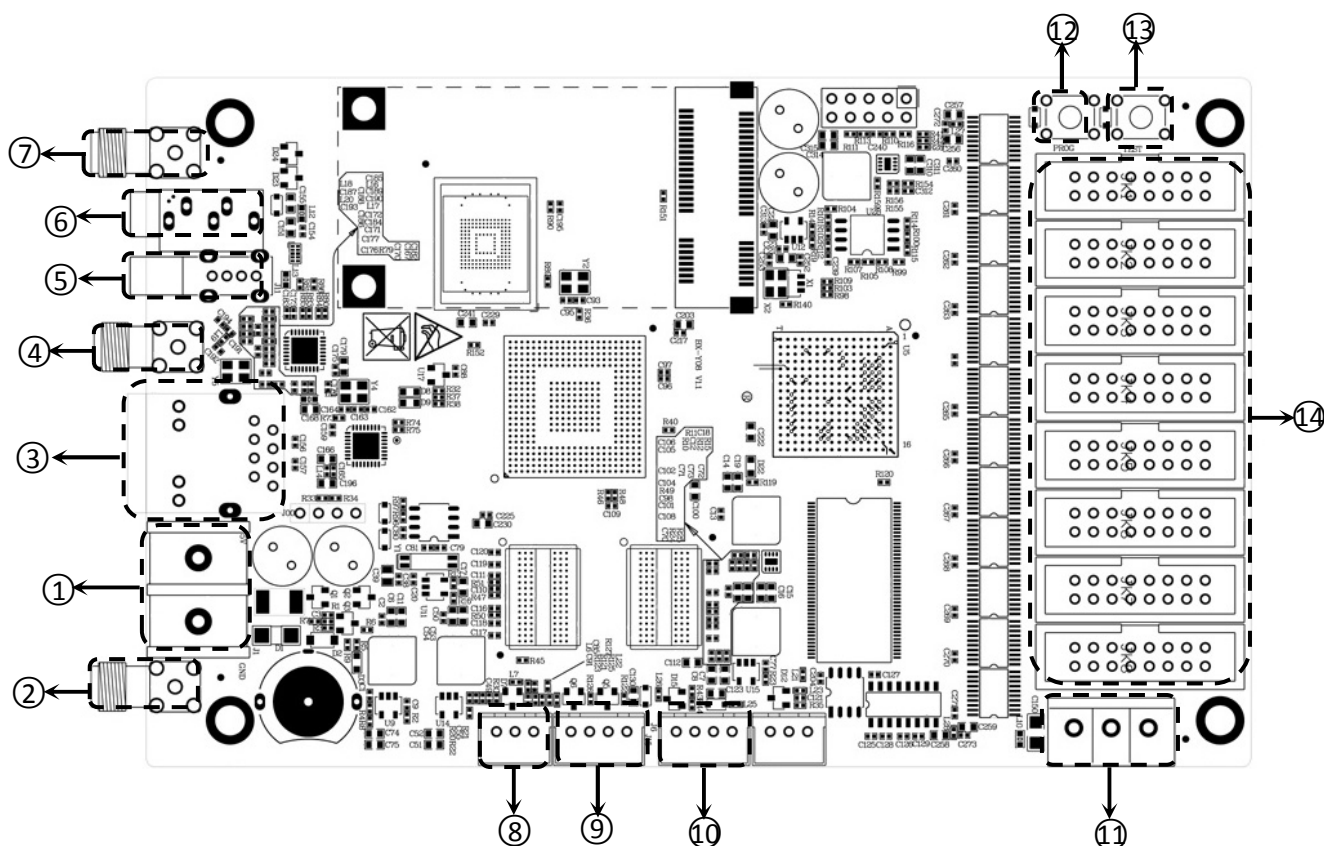
Screen index	
Parameter	Specification
Minimum size	64 × 64
Maximum size	512×256
Maximum width	1024
Maximum height	512

Product specification	
Input power supply	4V~6V; Please make sure the quality of power supply
Power Dissipation	≤10W
Temperature	-40℃~80℃

Dimension diagram



Interface diagram



Interface		
1	DC	5V power supply port, DC input, 5V, support 4V~6V
2	Antenna	4G Antenna
3	100M	100M Ethernet connect with computer
4	Antenna	WIFI antenna
5	USB interface	USB interface , Support USB disk transmission program
6	AUDIO	Audio output
7	Antenna	GPS Antenna
8	IR	XH254-3P IR controller interface
9	SWITCH	SWITCH Interface
10	LIGHT	Brightness sensor interface
11	Serial	Serial interface
12	PROG	Program switch button
13	TEST	Test button
14	T75 port	T75 (JK1、JK2、JK3、JK4、JK5、JK6、JK7、JK8)

Contact Us

Shanghai ONBON Technology Co.,ltd (Headquarters)

Address: 7 Floor, Tower 88, 1199#, North Qinzhou Road, Xuhui District, Shanghai City, China

Tel Phone: 086-21-64955136

Fax: 086-21-64955136

Website: www.onbonbx.com

ONBON (Jiangsu) Optoelectronic Industrial Co.,LTD

Address: 1299#, FuchunJiang Road, Kunshan City, Jiangsu Province, China

Sales Contacts

Tel: 0086-15921814956 0086-15800379719

Email: onbon@onbonbx.com

Second Development

Tel: 0512-66589212

Email: dev@onbonbx.com

iLEDCloud

Website: <http://www.iledcloud.com/>

